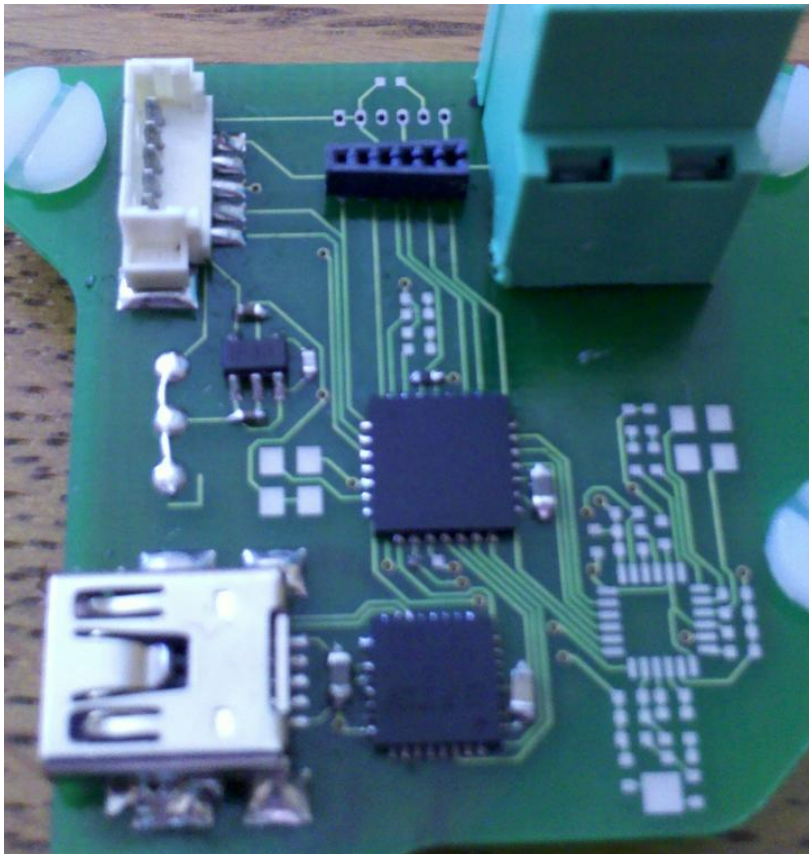


The Curvace Readout Board features a small microcontroller (dsPIC33FJ128GP802) and a USB to UART bridge. A cylindrical CURVACE sensor is connected to the Readout Board with SPI connection. The Readout Board itself is connected over USB with a PC.



Board with USB connector and USB-UART bridge (bottom left), dsPic (center), programming connection (top left), SPI connection (top middle) and power connection (top right)

The function of the Readout board is to read the data from the CURVACE sensor and provide the sensor data over a standard connection (USB) to a PC. The Readout board can perform simple preprocessing operations (e.g. fusion of data from top and bottom controller) as well as filtering operations (e.g. optic flow).

